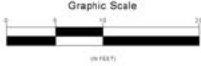


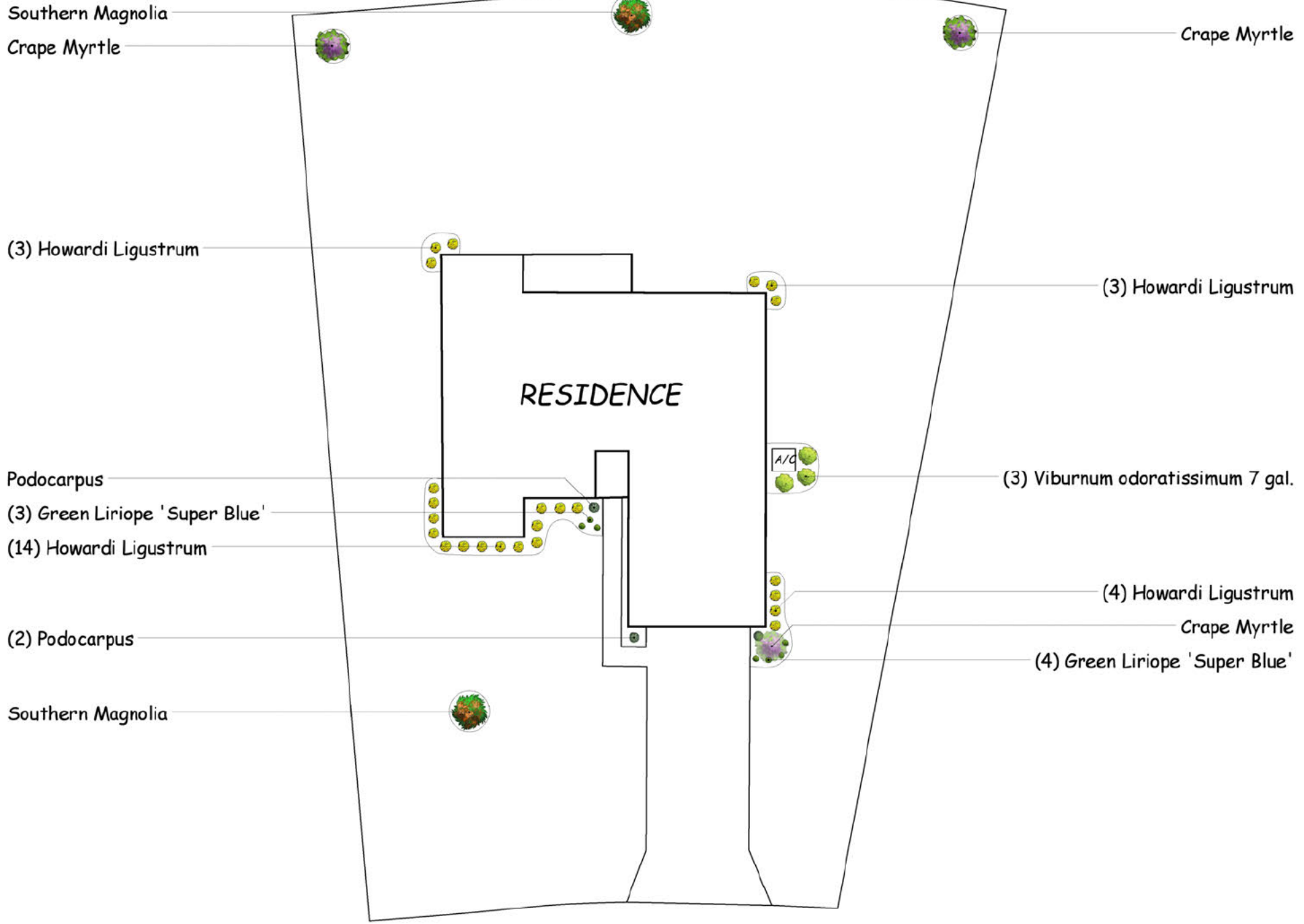
Plant Legend														
Symbol	Qty	Common	Botanical	Size	Symbol	Qty	Common	Botanical	Size	Symbol	Qty	Common	Botanical	Size
	3	Crape Myrtle	Lagerstroemia indica	30 gal./2" cal.		24	Howardia Ligustrum	Ligustrum japonicum	3 gal./24" x 18"		2	Southern Magnolia	Magnolia grandiflora	30 gal./2" cal.
	7	Green Liriope 'Super Blue'	Liriope muscari	1 gal./Full 1 gal.		3	Podocarpus	Podocarpus 'Maki'	3 gal./24" x 14" (3' OC)		3	Viburnum odoratissimum 7 gal.	Viburnum odoratissimum	7 gal./36"x24"

SOD IS 'ARGENTINE' BAHIA
 IRRIGATION TO PROVIDE FULL COVERAGE
 GROUND COVER TO BE PINE BARK NUGGETS (3" MIN.)
 SCALE 1" = 20'



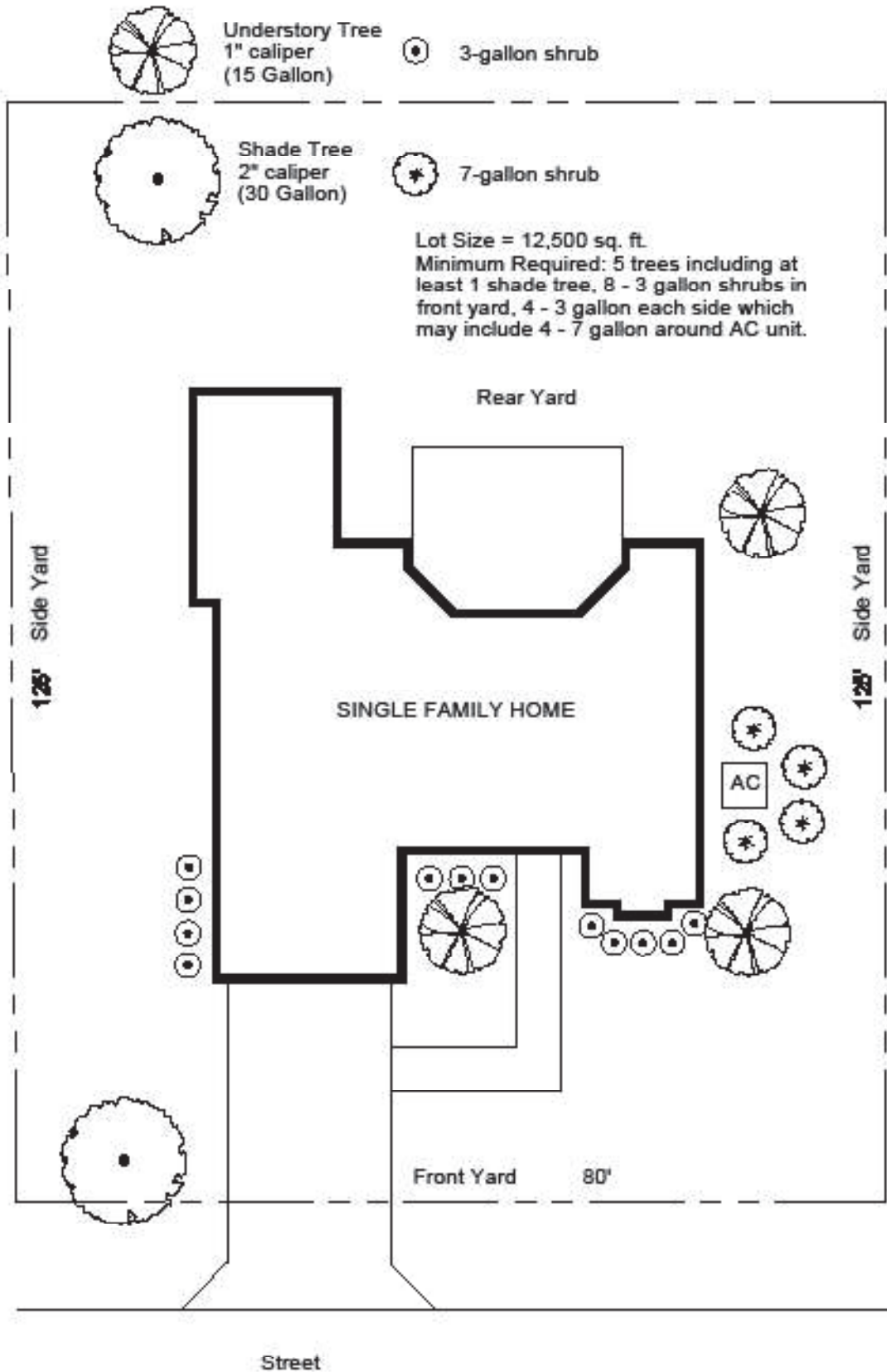

LANDSCAPE NOTES

1. The landscape contractor shall be responsible for all material and work as called for on the landscape plan.
2. All proposed materials shall be Florida #1 or better in quality based on the grades and standards for nursery plants by the Florida Department of Agriculture, unless otherwise noted.
3. All plant beds shall be top dressed with 2-3" of mulch, unless otherwise noted.
4. The landscape contractor shall be responsible for all stability and plumb conditions of every tree and shrub.
5. Plant list quantities are to be used as a guide only. The plan is to take precedence.
6. All plant material should be planted level with grade or slightly higher.
7. All work performed on site is to be completed in a professional manner. The landscape contractor is responsible for keeping the site clean of debris and materials within their scope of work at the end of each day.
8. Plant material as depicted on plan is subject to availability and may be substituted at the sole discretion of the landscape contractor with a similar plant or tree.
9. No Warranty on materials whose viability is out of the contractor's control (Wildlife, Environmental, or Cold Damage)



B. SFR/DPX Developments
SFR/DPX Typical Foundation Planting Plan

INTERIOR LOT MINIMUM LANDSCAPING



CORNER LOT MINIMUM LANDSCAPING

