



Open Until
Filled

Traffic Engineer



city of
PALM COAST



The City

One of Florida's newest cities (incorporated 1999), Palm Coast is a Florida paradise – situated on 70 miles of saltwater and freshwater canals and the Intracoastal Waterway and just minutes from pristine Atlantic Ocean beaches. Vibrant lifestyle and the natural environment go hand-in-hand here. The City offers a dozen beautiful parks, 125+ miles of connecting trails and paths for walking/bicycling, abundant fishing and boating, a year-round Running Series, and world-class tennis and golf.

Lined with historic oaks, towering pines and indigenous vegetation, Palm Coast's parks and trails showcase the splendid elegance of the native Florida landscape. Bird-watching is popular at St. Joe Walkway and Linear Park, which are designated as Great Florida Birding & Wildlife Trails, and visitors can spot dolphins and seabirds as they stroll along the Intracoastal at Waterfront Park. The City currently has an estimated population of 85,000.



The Department and Division

The Community Development Department has a wide variety of functions that serve both internal and external customers.

The divisions of the department include: Planning, Building, Code Enforcement and Construction Management & Engineering. The Construction Management & Engineering Division is comprised of 23 full-time staff that oversee the management & operation of the city's stormwater system, technical design review and construction inspection of site-work & infrastructure (utility, transportation, stormwater and civil) of private & public development as well as management of the City's Capital Improvement Plan and Projects.



The Position

The City of Palm Coast is seeking an experienced Traffic Engineer. Under management direction, the purpose of the position is to perform professional engineering services to plan, coordinate and implement private and public project development and maintenance operations for the city's transportation systems. Employees in this classification perform at senior professional level, and are accountable for planning, development and management of projects in compliance with all applicable city/state/federal codes and regulations, and according to all acceptable engineering practices as well as management of the long range transportation program. Position is responsible to coordinate and be the lead contact with consultants as well as review and comment on proposed city capital projects and private development projects as they relate to traffic and transportation. Employee works with a high degree of independence and initiative. May plan, organize, assign and review the work of subordinate level employees.



Key Duties and Responsibilities

- Plans and manages transportation engineering projects, programs and operations to ensure planning, development and construction are in compliance with all applicable city/state/federal codes and regulations, and according to all acceptable engineering practices.
- Performs engineering and design work of the city's capital improvement projects including but not limited to roadways, bridges and traffic signals; manages design and construction contracts and projects.
- Researches, prepares reports & studies, drafts specifications, and presents recommendations for capital improvement programs and projects as well as transportation planning and traffic operations.
- Performs transportation engineering review and approval of transportation studies, concurrency, maintenance of traffic and technical standards for commercial and residential developments and permits; performs review of as-built information to verify construction is in general conformance of approved design.
- Performs professional transportation engineering review and certification of applicable documents/reports.
- Maintains active communication with contractors, engineers, surveyors, government agencies and the general public for any engineering, surveying or construction issues.
- Develops current and long range transportation planning programs to maintain adopted level of services.
- Manages and maintains concurrency, impact fee and proportionate fair share transportation programs.
- Coordinates with the Florida Department of Transportation (FDOT) District 5, River to Sea Transportation Planning Organization (TPO), and local governments regarding transportation planning, funding and improvements. Preparation and submission of applications for TPO/FDOT 5-year work program, transportation enhancement program and other TPO, state and federal grants.
- Investigates, analyzes and develops recommendations, if necessary, traffic system operation and safety issues and studies such as traffic calming, access management, traffic signal timing evaluations, speed limit studies, traffic signal warrant analysis, sight distance evaluations, intersection and corridor safety analysis, corridor travel time and delay studies. Conducts traffic data collection which is necessary for the development of traffic operational studies such as turning movement counts, directional volume and traffic counts.

Transportation System

Roadways

The roadway network consists of 1,186 lane miles of roadway within the City limits. The City is currently in the process of finalizing a long range rehab & renewal plan with the assistance of TransMap, Inc. who collected data for pavement condition and roadway striping/markings.

Paths/Trails

The path network consists of over 125 miles of paths/trails. The City continues to add paths and to explore opportunities to expand the path network.

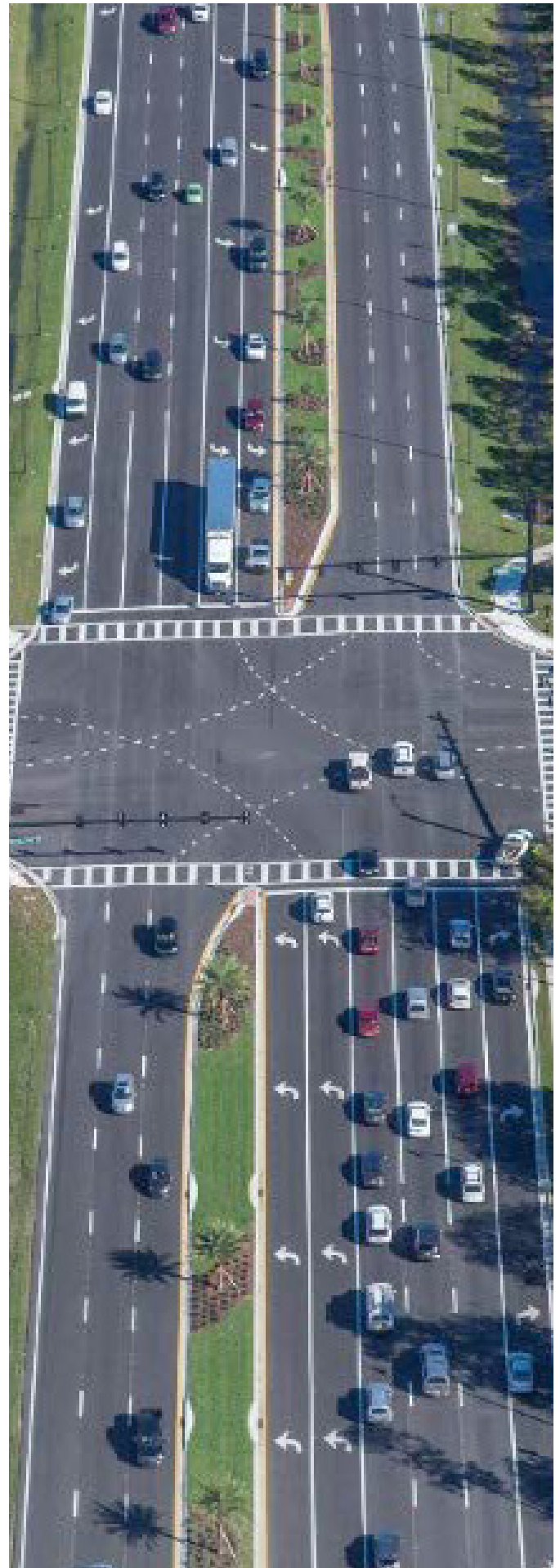
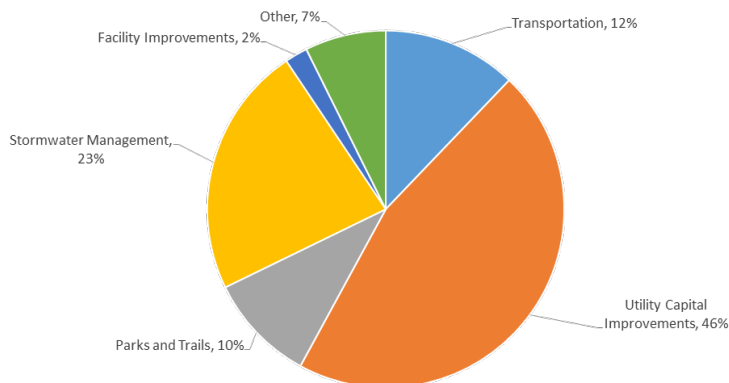
Traffic Signals

The City currently has 52 traffic signals and maintains these signals as well as an additional 8 signals within the County. The City began the implementation of an Arterial Traffic Management System (ATMS) for the traffic signals in 2017 by connecting signals to the city's fiber network, adding cameras and networking the system with Trafficware's ATMS.now software.

Capital Improvement Plan: Transportation

The City continues to grow with projected population of 130,000 in 2030 as well as planned development to the west of US1 will require the expansion of the current transportation system. The current projects consist of capacity expansion, safety improvements and maintenance of the transportation network such as roadway widening, new turn lanes, sidewalks, new traffic signals, conversion of existing traffic signals, signal optimization, bridge repairs/replacement, roadway pavement & striping rehabilitation/renewal.

FY19 Capital Improvement Plan with Over \$52,000,000 in Projects





The Ideal Candidate

The Construction Management & Engineering Division is seeking a Traffic Engineer to manage all aspects related to City Transportation Projects such as traffic studies, capital improvements, operations, safety, and traffic control facilities including the ITS signal system.

The individual will be outgoing, personable and a strategic thinker. The ideal candidate will work well across department and division lines and with consultants and contractors. He/She will need to be able to multi-task and work well in a team-oriented environment.

An understanding of Transportation Modeling and experience with Synchro and HCS software is preferred.



Minimum Qualifications

- Bachelor's Degree in Civil Engineering or related engineering field; supplemented by five (5) years technical experience in transportation engineering; or an equivalent combination of education, training, and experience.
- Must be a Registered Professional Engineer in any State of the United States with the ability to register in the State of Florida within (6) months of employment.
- Must possess and maintain a valid Florida Driver's License.

Compensation and Benefits

The anticipated starting salary range is \$76,613 – \$117,562. The salary will depend on qualifications and experience. Palm Coast offers a comprehensive benefits package; including a retirement plan where the City contributes 10% of the salary towards a 401(a) plan. In addition, the City offers an additional match up to 2% with employee contribution towards a 457 plan. For more information, about the City's outstanding benefits, such as health/dental insurance, vacation and sick leave, and other insurance plans, please contact Human Resources at: human_resources@palmcoastgov.com or (386) 986-3718.

How to Apply

Apply online through the City's website at <http://www.palmcoastgov.com/employment/openings>. Questions should be directed to Human Resources at human_resources@palmcoastgov.com or (386) 986-3718.

Confidentiality

Under the Florida Public Records Act, all applicants are subject to disclosure upon receipt. References are checked after the interview and selection process is completed.

The Process

Applications will be accepted until the position is filled.

Other Important Information

The City of Palm Coast is an Equal Opportunity Employer and encourages women, minorities and veterans to apply. A veteran's preference will be awarded per Florida law.