

OUR GREEN CITY HALL

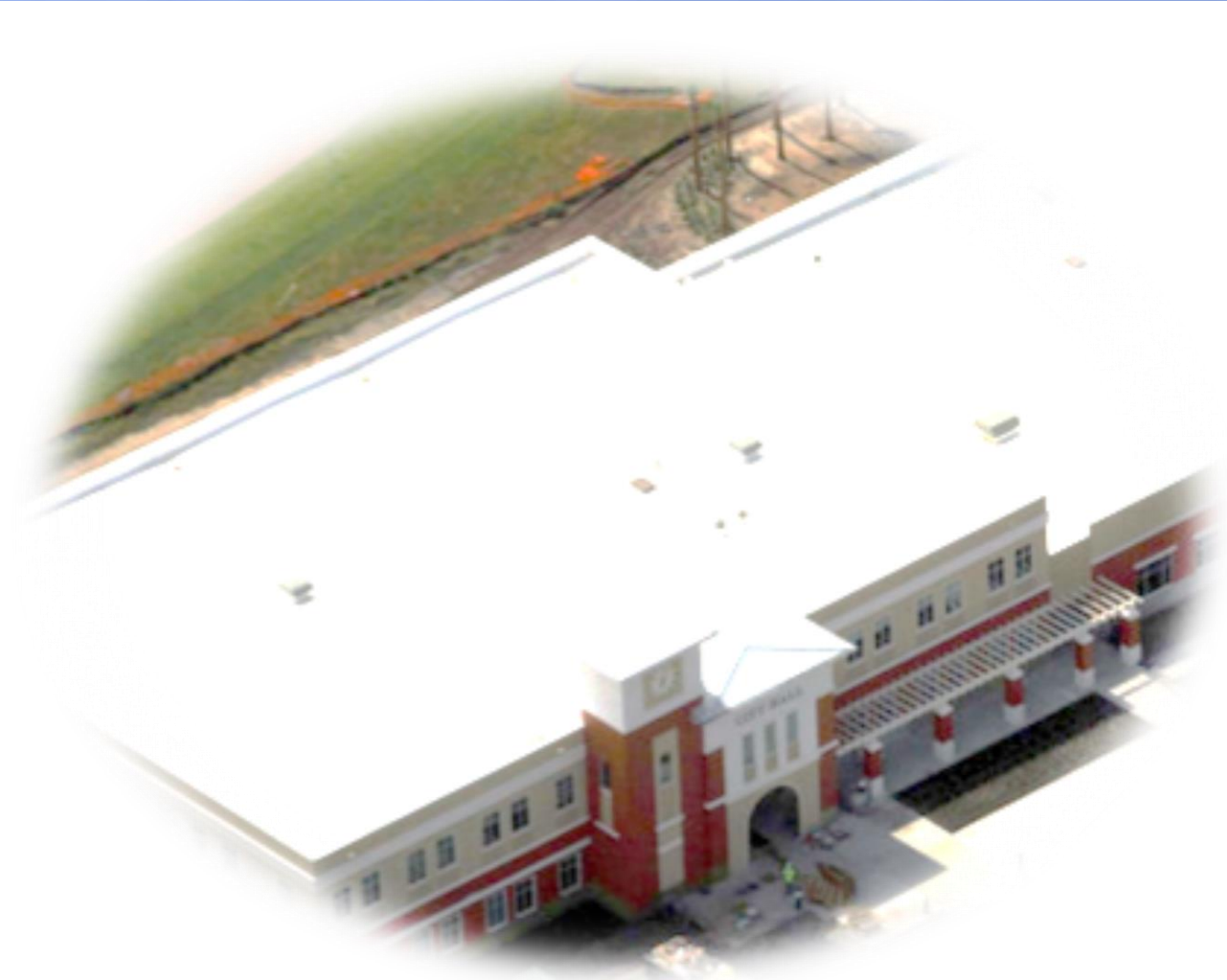
City Hall

- The new City Hall is in the middle of getting a LEED certification!
- LEED- Leadership in Energy & Environmental Design
- LEED helped us to...
 - Create a healthier & more productive work & community meeting space
 - Design for efficient operating costs
 - Reduce waste sent to the landfill
 - Conserve natural resources



City Hall Roof

- Since the roof is bright white, it reflects solar rays! This reduces the solar heat both outside and inside City Hall
- Research selections at the Cool roof rating council when next installing new roofing at home or your business



Central Lake

- A beautiful storm water detention system that is engineered to ensure storm water run-off meets quality standards and poses minimal potential for undesirable erosion and flooding down-stream



Rain Garden

- Our rain garden, similar to a “bioswale”, also helps to manage storm water on site.
- These functional landscape features are specifically designed to capture, clean and absorb rain water run-off.

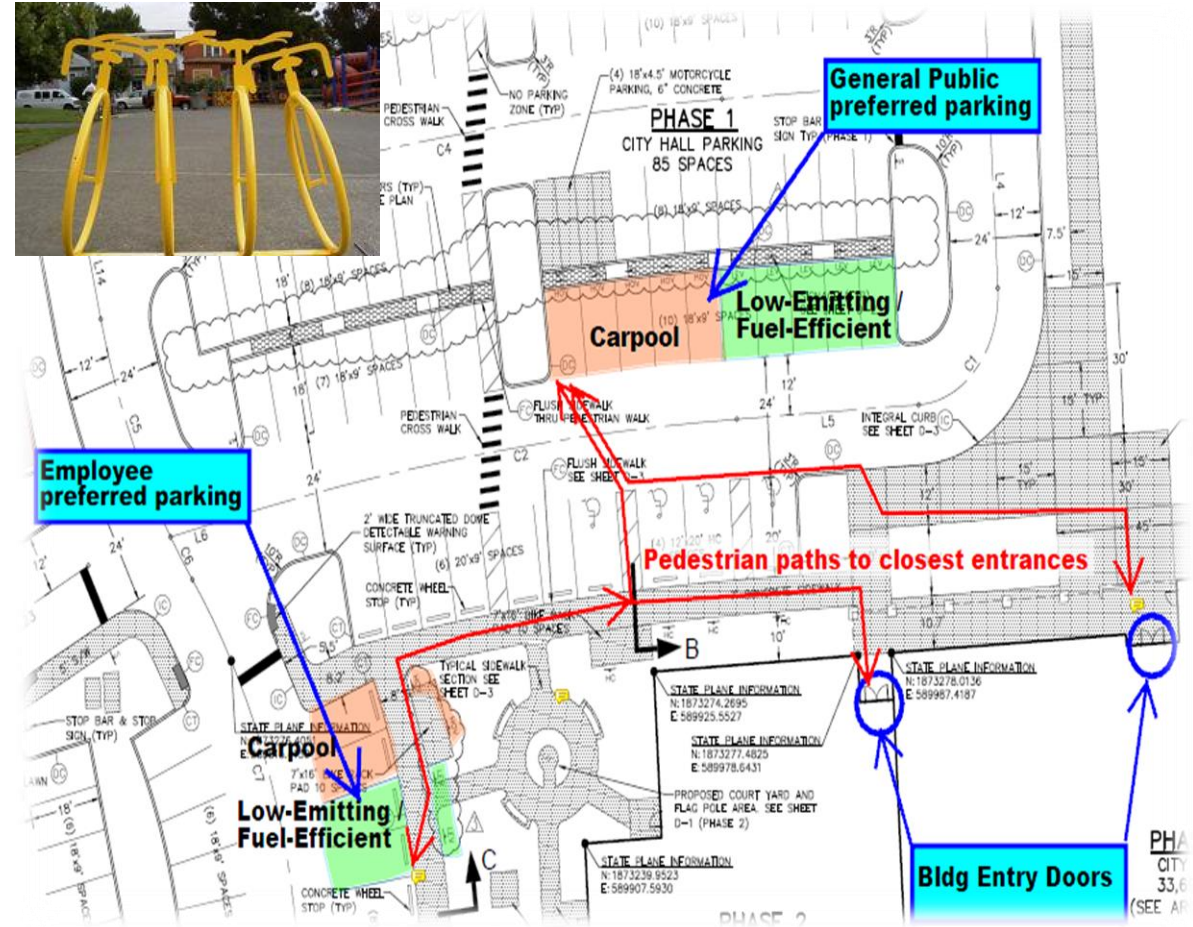


- You can install a rain garden as a landscape solution in a low lying area or near a roof downspout in your yard.



Alternative Transportation

- In order to preserve as much of the site for community enjoyment as possible, we did not oversize the parking lot.
 - We are utilizing on-street parking to help meet the anticipated parking needs
- Several bike racks are available
- Reserved parking spaces are available for staff and visitors that carpool here
- Several spaces are also reserved for qualifying "eco-preferred" vehicles



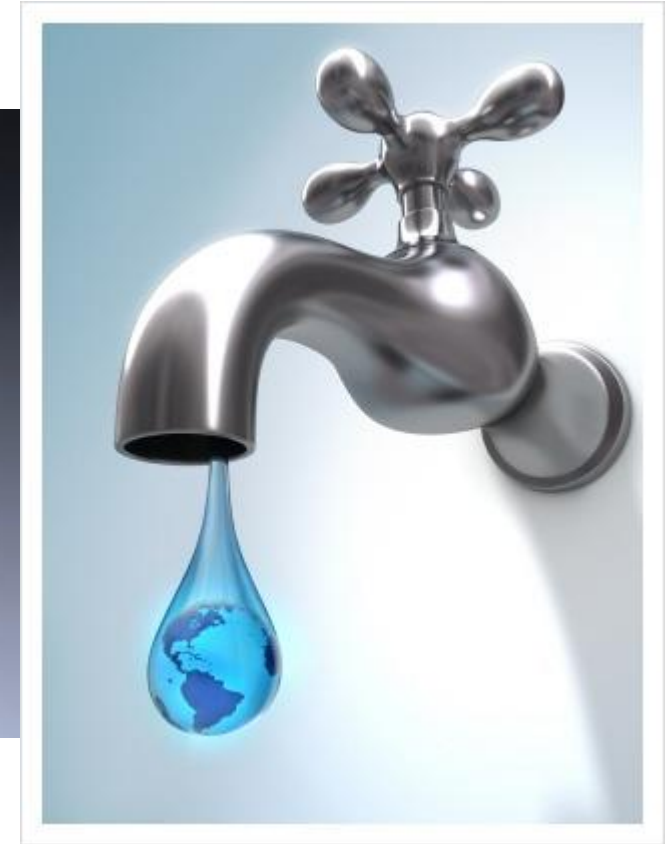
Construction

- Responsible recycling ensured over 75% of the total waste resulting from our construction work was effectively diverted from the landfill
- Conscientious construction material sourcing was conducted to use recycled and regionally based materials



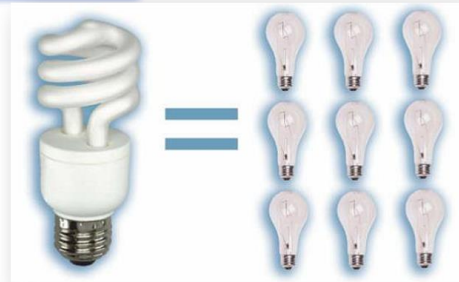
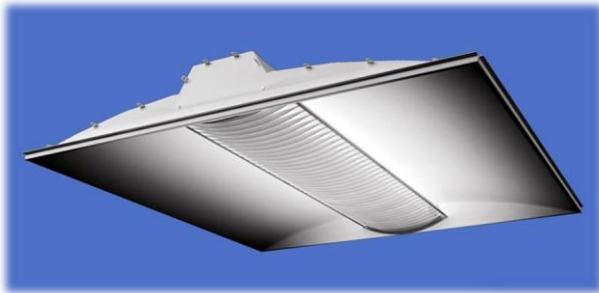
Plumbing

- In total, the City Hall plumbing fixtures use more than 40% less water than standard fixtures
- Annual building operations will use at least 100,000 gallons less clean water than if standard fixtures had been installed
- Choose WaterSense labeled plumbing fixtures to help conserve water in your own home or business

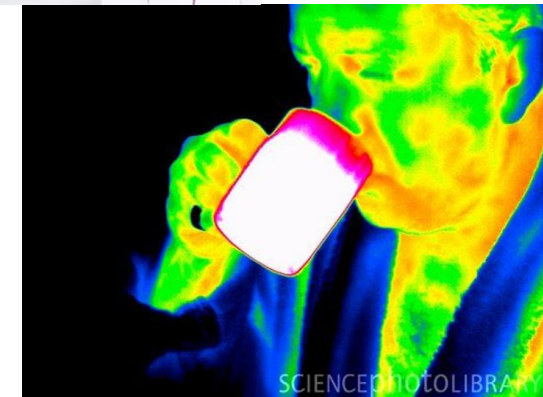


Lighting

- Our light fixtures use high efficiency LED and fluorescent lamps (bulbs)
- As a result, the total exterior & interior lighting design is 40% more energy efficient than required by code
- Consider a higher efficiency option when replacing bulbs at home



- The interior lighting uses ceiling and wall switch “smart” controls
- Sensing movement and body heat, they automatically turn lights off to conserve energy in unoccupied rooms



Furniture

- Safer “Low-VOC” products, which have lower airborne chemical release characteristics, were installed inside the building
- This included the most critical products, such as adhesives, paints, flooring products, fabricated doors and built-in cabinetry
- Minimizing the introduction of volatile organic compounds helped to reduce the “new building smell” as well as initial and long term adverse health impacts for the building occupants



Irrigation

- Our landscape was specifically designed using beautiful Florida-friendly plant selections in conjunction with higher efficiency mister and drip irrigation wherever possible
- Extremely heat and drought tolerant plants provide visual interest while reducing the amount of water required to maintain their health
- In addition, the installed irrigation system relies exclusively on the City's reclaimed water supply.
 - This strategy alone will conserve countless gallons of critical fresh water each year.



Thank You

- Thank you for helping us keep Palm Coast green!
- You can go to palmcoastgov.com/green to look for programs and initiatives you can participate in to be green
- Every little thing you do to help the environment will make a difference

