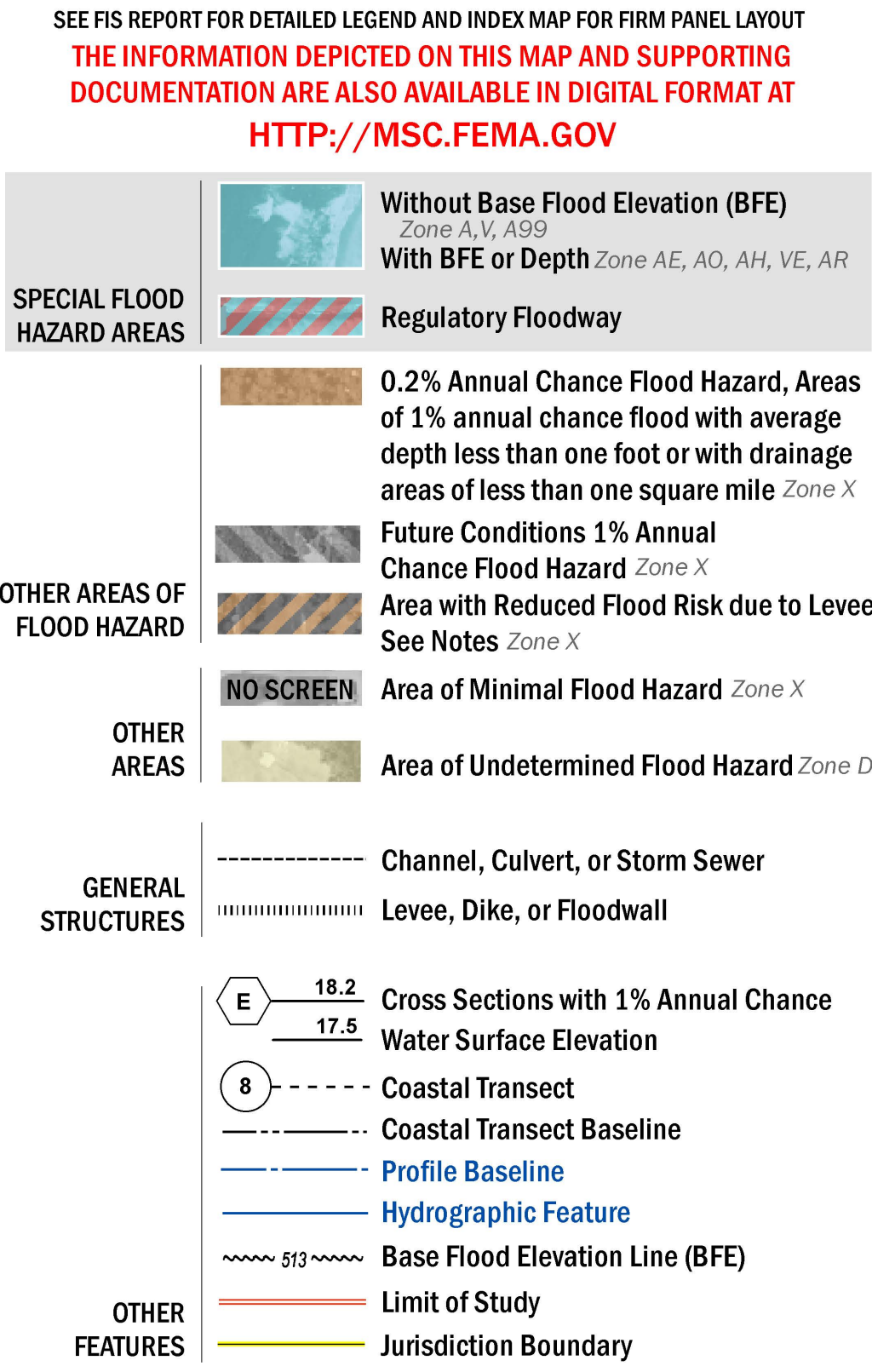


FLOOD HAZARD INFORMATION



NOTES TO USERS

For information and questions about this Flood Insurance Rate Map (FIRM), available products associated with this FIRM, including historic versions, the current map date for each FIRM panel, how to order products, or the National Flood Insurance Program (NFIP) in general, please call the FEMA Map Information Exchange at 1-877-FEMA-MAP (1-877-338-2627) or visit the FEMA Flood Map Service Center website at <http://mmsc.fema.gov>. Available products may include previously issued Letters of Map Change, a Flood Insurance Study Report, and/or digital versions of this map. Many of these products can be ordered or obtained directly from the website.

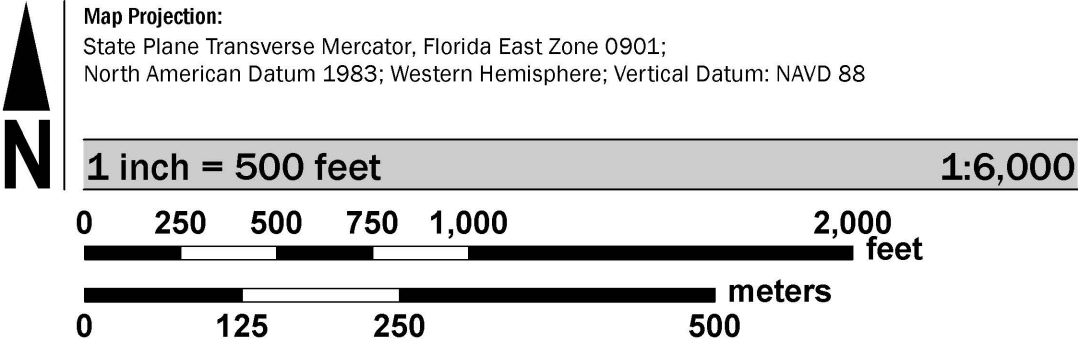
Communities annexing land on adjacent FIRM panels must obtain a current copy of the adjacent panel as well as the current FIRM Index. These may be ordered directly from the Flood Map Service Center at the number listed above.

For community and countywide map dates refer to the Flood Insurance Study Report for this jurisdiction.

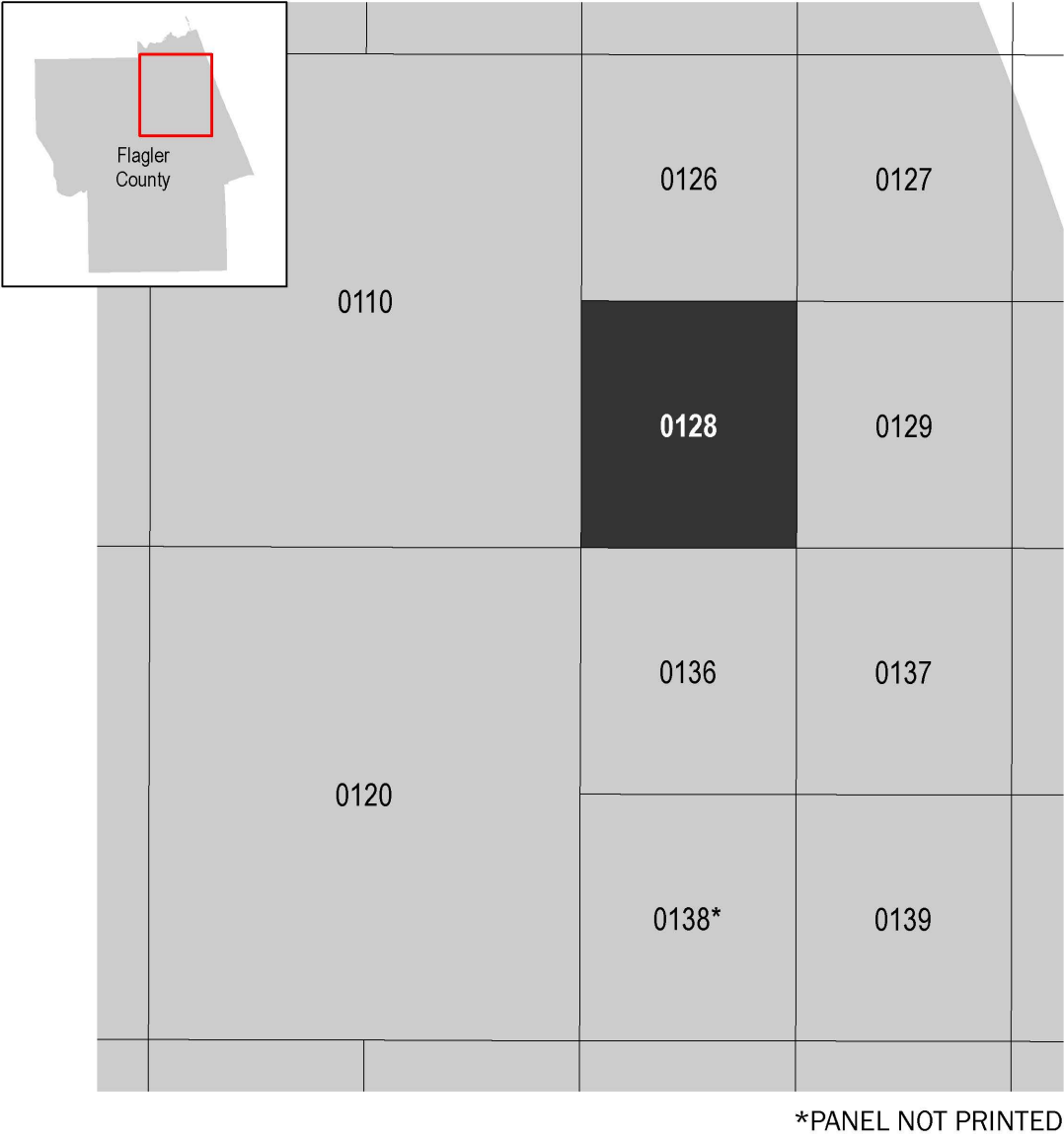
To determine if flood insurance is available in this community, contact your insurance agent or call the National Flood Insurance Program at 1-800-638-6620.

Base map information shown on this FIRM was provided in digital format by the Flagler County GIS Department, dated 2015; the U.S. Census Bureau, dated 2015; the U.S. Fish and Wildlife Service, dated 2015; the Florida Resources and Environmental Analysis Center, dated 2003; the U.S. Department of Agriculture Farm Service Agency, dated 2013; and FEMA, dated 2006.

SCALE



PANEL LOCATOR



National Flood Insurance Program

NATIONAL FLOOD INSURANCE PROGRAM
FLOOD INSURANCE RATE MAP

FLAGLER COUNTY, FLORIDA
and Incorporated Areas

PANEL 128 OF 345

Panel Contains:
COMMUNITY PALM COAST, CITY OF

NUMBER 120684
PANEL 0128
SUFFIX E

VERSION NUMBER 2.3.3.2
MAP NUMBER 12035C0128E
MAP REVISED JUNE 6, 2018